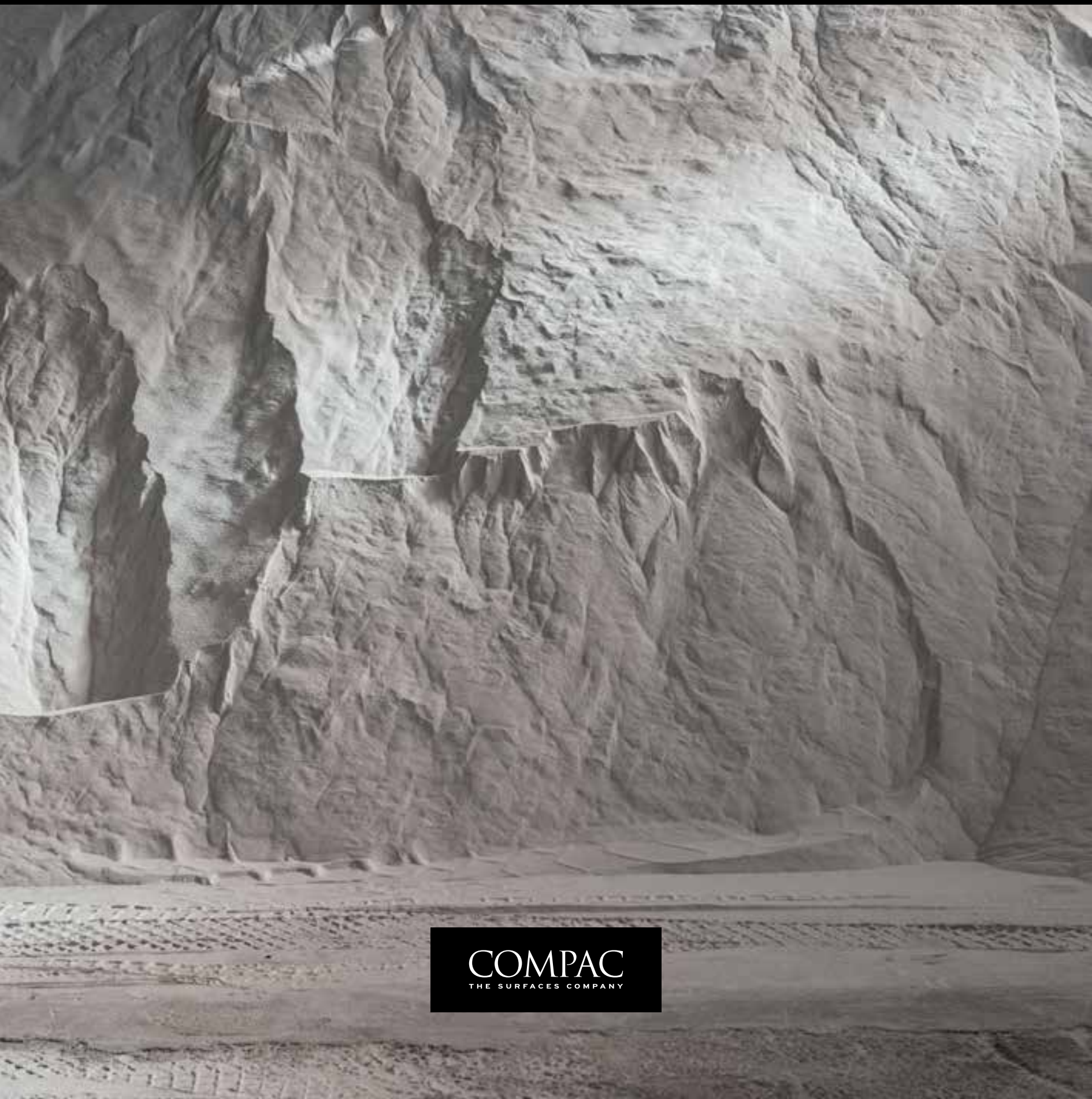


GENESIS

CREATED BY ARIK LEVY



COMPAC
THE SURFACES COMPANY

04	IQ MADE WITH EMOTIONS
06	DIALOGUES
08	ARIK LEVY BIOGRAPHY
10	GENESIS CONCEPT
12	GENESIS COLLECTION
14	NEBULOUS OF GENESIS
18	Nebulous Gold by Arik Levy
22	COBWEB OF GENESIS
26	Cobweb by Arik Levy
30	ICE OF GENESIS
44	Ice Max Pure by Arik Levy
50	Ice Max Black by Arik Levy
56	Ice Black by Arik Levy
66	Ice White by Arik Levy
80	DESIGNS SHOWS
98	COMPAC
102	ENVIRONMENTAL COMMITMENT
104	SUSTAINABILITY AWARD 2020

IQ Made with emotions

The evolution of COMPAC IQ collection are created with in-depth research in to natural structures existing around us. It is within the metaphors and projected imagination that we see in our mind more then we see with our eyes. It connects the emotional mechanism, instincts and reflects of creativity. Some patterns might be visible to the eye at first sight, others might be invisible... at the same time our mind develops images that are pure creativity by only using visual hints of collective memories or nature.



ICE OF GENESIS

At COMPAC we firmly believe in the strength of our talent and in collaboration, in the power of our minds to transform matter into something genuine and memorable.

Our ambitious urge to design surfaces capable of transforming and beautifying homes, spaces and buildings, creating exciting sensations and long-lasting solutions, has allowed us to reach heights that others only find dizzying.

We know that our strength lies in the talent of each member of our projects, in a model of ongoing collaboration that allows us to create opportunities that challenge all our limits.

Thanks to this way of thinking and acting - which we like to call "Minds over Matter" - we can produce projects as incredible and exciting as this collaboration with artist and designer Arik Levy and the birth of the ICE OF GENESIS collection. It's an intellectual, technological and creative journey that is sure to inspire the most demanding clients in the world.



ARIK LEVY

The artist



BIOGRAPHY

Artist, technician, photographer, designer, video artist, Levy's skills are multi-disciplinary and his work can be seen in prestigious galleries and museums worldwide. Best known publicly for his sculptures – such as his signature Rock pieces – his installations, limited editions and design, Levy nevertheless feels "The world is about people, not objects". Hailing originally from Israel and moving to Europe, after his first participation in a group sculpture exhibition in Tel-Aviv in 1986, Levy currently works in his studio in Paris. His formation was unconventional, where surfing, as well as his art and graphic design studio, took up much of his time back home.

Following studies in 1991, he gained a distinction at the Art Center Europe, the Switzerland branch of Art Center Pasadena LA. After a stint in Japan where he consolidated his ideas producing products and pieces for exhibitions, Levy returned to Europe where he contributed his artistry to another field – contemporary dance and opera by way of set design. The creation of his studio then meant a foray back to his first love, art and industrial design, as well as other branches of his talents.

Considering himself now more of a "feeling" artist, Arik Levy continues to contribute substantially to our interior and exterior milieu, his work including public sculpture, as well as complete environments that can be adapted for multi-use.

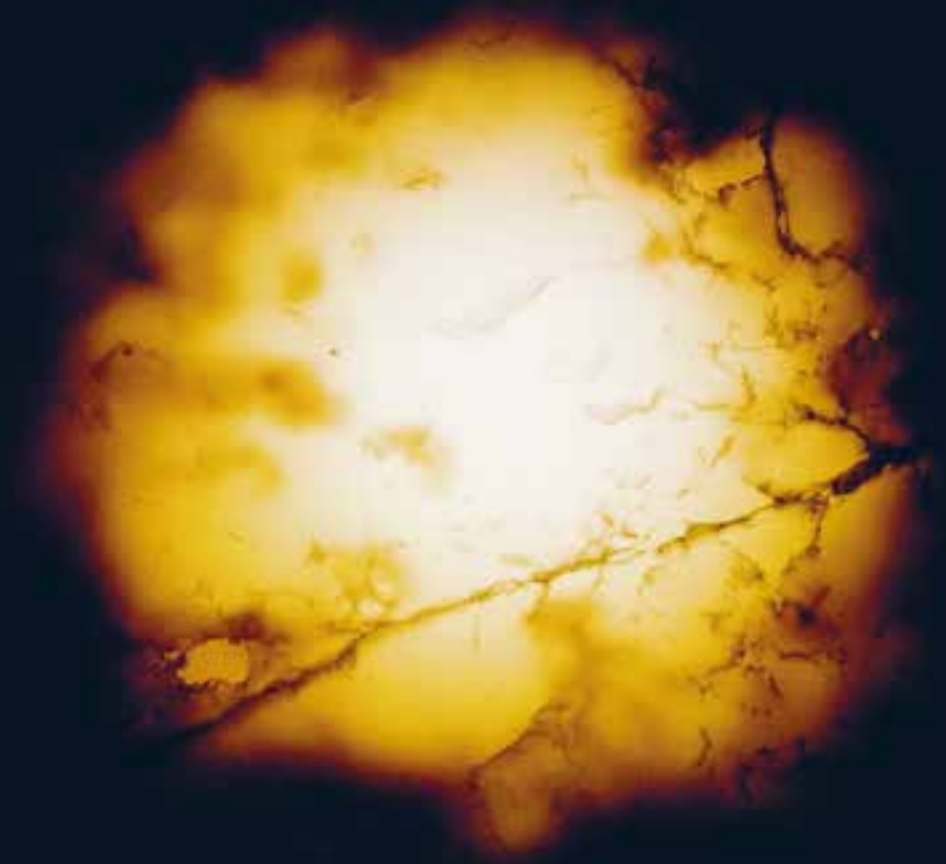
www.ariklevy.fr



1. GlassBlock Reflection 33.

2. LogBronze 29A Bronze
Edition 8, 2016

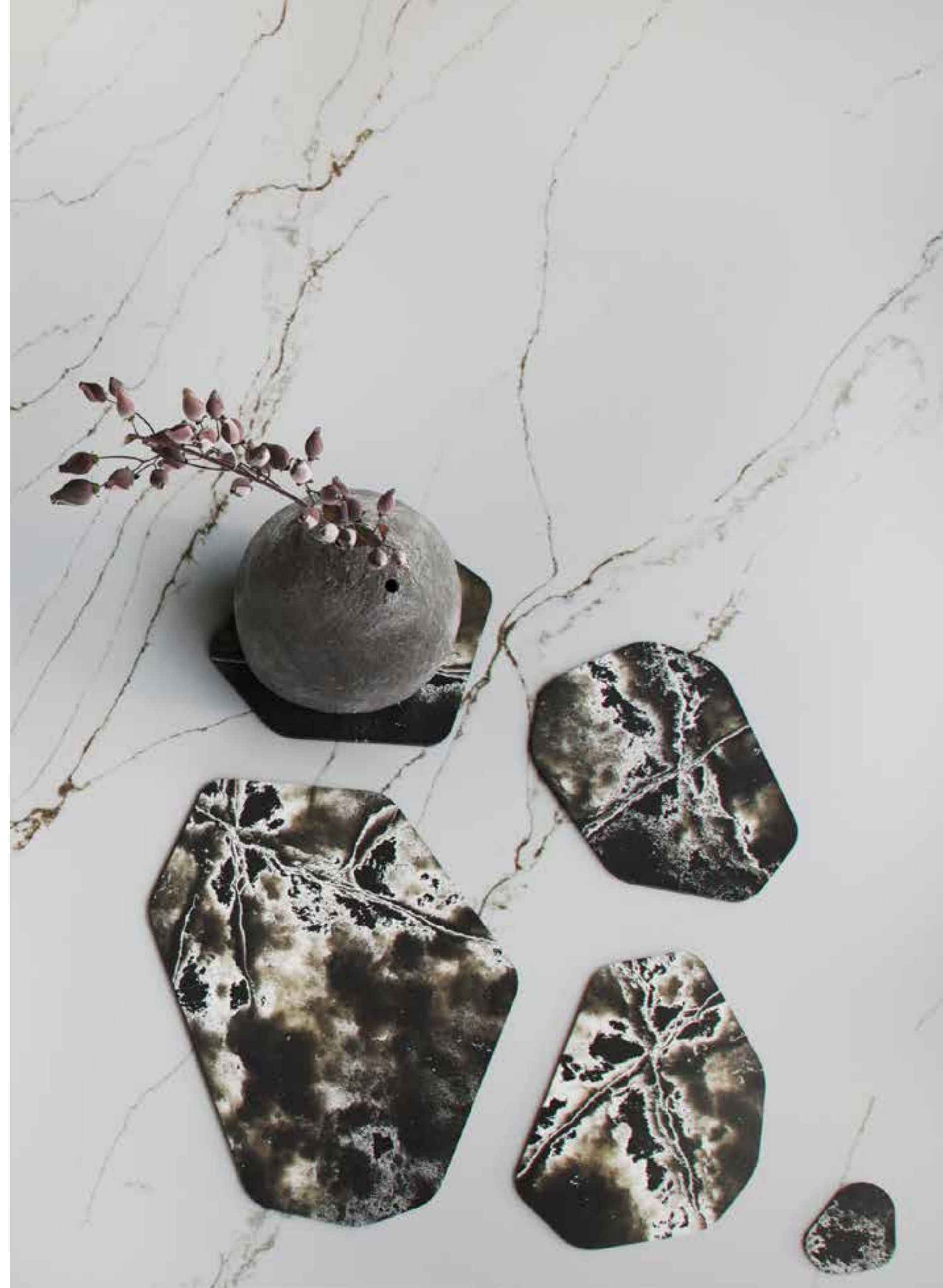
GENESIS Concept



GENESIS is the beginning of everything:
the beginning of the world,
the beginning of nature,
the beginning of natural elements,
the beginning of an idea,
the beginning of the creative process...

GENESIS

CREATED BY ARIK LEVY





NEBULOUS OF GENESIS
created by Arik Levy



NEBULOUS
OF
GENESIS
CREATED BY ARIK LEVY

Nebulous... A nebula is an interstellar cloud, it is the inspiration form out of space. A star cluster as a pattern of mineral galaxies appears as domestic planetary system. Just like Nebulous is forming in space its sculptural appearance, the patterns created are of amorphic quality. Everywhere we look at the eye discovers a vast number of configurations and visual compositions. An idea that traveled light years of distance becomes an experience of vibrant motive.

NEBULOUS GOLD BY ARIK LEVY





Countertop and Backspalsh, Nebulous Gold by Arik Levy



COBWEB OF GENESIS
created by Arik Levy



COBWEB
OF
GENESIS
CREATED BY ARIK LEVY

Cobweb is inspired by the amazing construction and web the spiders are making... We already know that in proportions to the section of the spiderweb it is considered of outstanding resistance and force. These are not only beautiful constructions specific to each species but also a great metaphor to our Quartz slabs in both: strength and beauty. The visual parallel between natural stone patterns and the Cobweb patterns are more than inspiring. One can imagine a network pattern of natural quartz being webbed into the stone by the power of tectonic movement.

COBWEB BY ARIK LEVY







ICE OF GENESIS
created by Arik Levy

ICE OF GENESIS is the beginning of everything; the origin of nature, and of matter. The origin of an idea, a creative process that seeks to change the status quo of surface coverings. It is the most ambitious collection from COMPAC, offering a series of surfaces in which technology, design and art come together to create something that has never been seen before.

For such an inspiring endeavour, we collaborated with a truly disruptive and transgressive mind, someone who can see beyond: the designer and artist Arik Levy.

01 THE VISION

ICE OF GENESIS is the result of the huge challenge of creating a material that has depth but is also flat and resistant. Imitating the feeling of walking on ice, exquisitely balanced between fragility and stability.

"It is a mixture of different elements: nature, emotions, social codes and science. It's this merger where we look for connection."





02 THE CONCEPT

Inspired by the great ice lakes that can be found in the Arctic, ICE OF GENESIS reveals on its surface visual fragments similar to those produced by natural stone, causing the eye to delve into ethereal qualities and surprising material transparency.

The goal was to create warmth, coolness and abstraction. The black pieces are abstract, the red ones represent the warmth of the earth, whereas white speaks of coldness. Whatever they say, they all produce a sense of depth, responding to parameters that seem unknown in the visual sense, but are closely connected to the collective memory of our very natures.

"A balance between solid and liquid; elements that are constantly connected in our day-to-day lives. It is an emotional value. The emotion of ergonomics."





PACO SANCHIS

"Cooperating with Arik Levy is very thrilling - he likes collaborative work. From a strategic point of view, he has been able to understand our product strategy and add a lot of value from the standpoint of creative design."

From the design viewpoint, a COMPAC slab is a 3D creation material. We utilize the hardest stone currently being used in construction. Thanks to our technology and the raw materials we work with, we have the ability to offer architects a range of possibilities to create their own customized projects."

ARIK LEVY

"The juxtaposition of gravity and mineral is very important. What I hope is that gravity will bring that stationary sort of sensation, and the mineral brings a certain kind of beautiful fragility. It looks like it's made out of a block, but it isn't made from a block, so it is a very unique piece in essence. We are able to match the veins, and their energy, and the way they look. And that isn't solid; it's made out of places, proving that we can compose nearly anything in volume and in a specific space."

That moment when an architect and designer look at it and understand the fact that is not carved out of a block, they understand the potential; they can build anything without taking anything away, creating an environment which is not necessarily rectilinear or presenting 90-degree corners. They can build it up and make whatever they want. It is entirely unique for surfaces to be transformed into volume."

It's like the origami principle: you can fold a flat thing into a three-dimensional object. It is very much like folding your own ideas."





03 THE SCALE

Another key factor was the scale, the idea of ZOOM. When we cut into stone, the veins have a similar size due to the geological event. So we wanted to create a vein that had not been seen before. Instead of limiting ourselves to small sizes, we wanted to enjoy veins in much larger proportions.

“So we played around with the scale. This way we were able to customize and create unique pieces, but also work in mass productions.”



ICE MAX PURE BY ARIK LEVY





Mineral Mass,
Ice Max Pure by Arik Levy



Wall, Ice Max Pure by Arik Levy
Countertop, Ice Max Black by Arik Levy

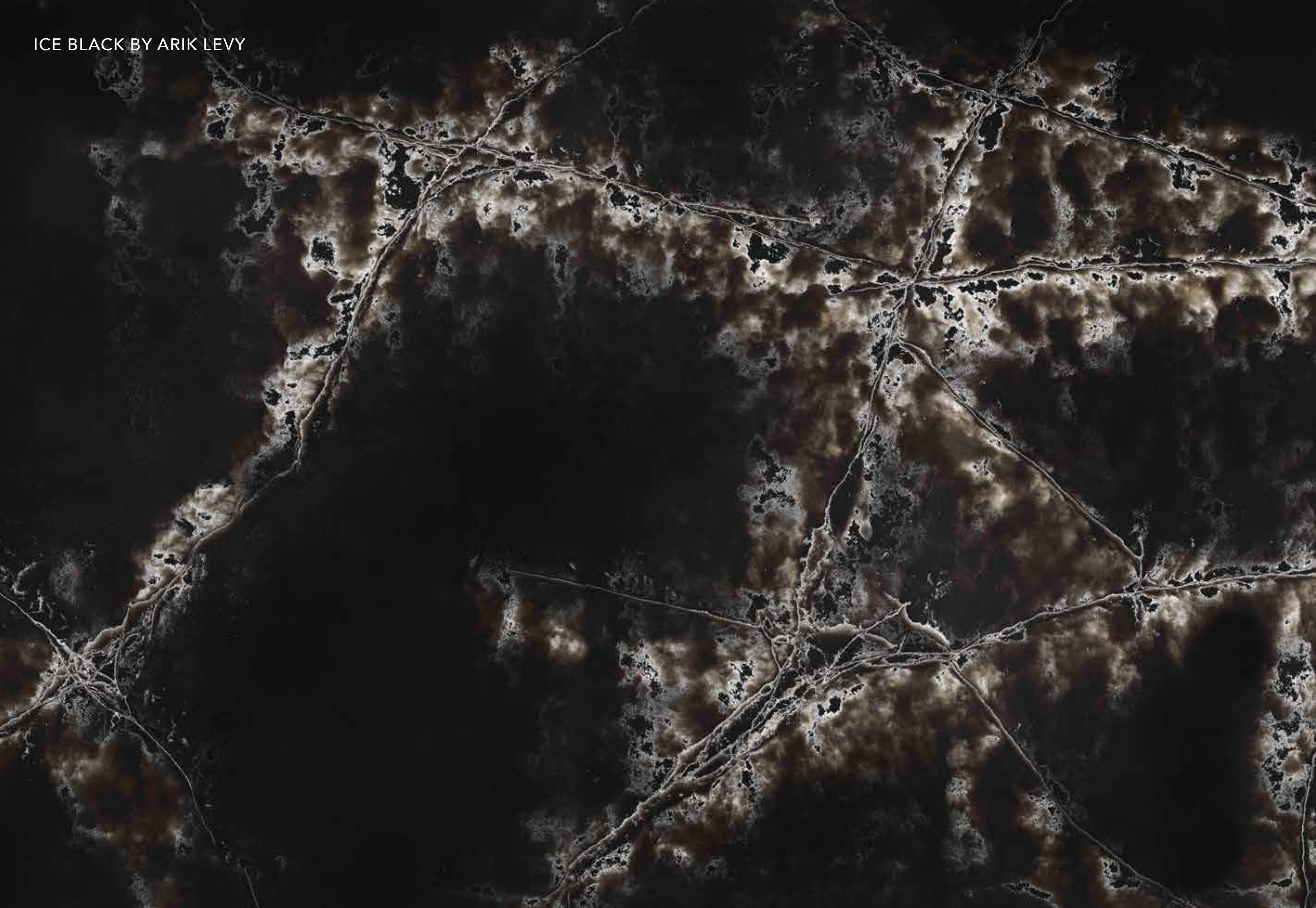
ICE MAX BLACK BY ARIK LEVY





Table, Ice Black by Arik Levy

ICE BLACK BY ARIK LEVY





Ice Black by Arik Levy



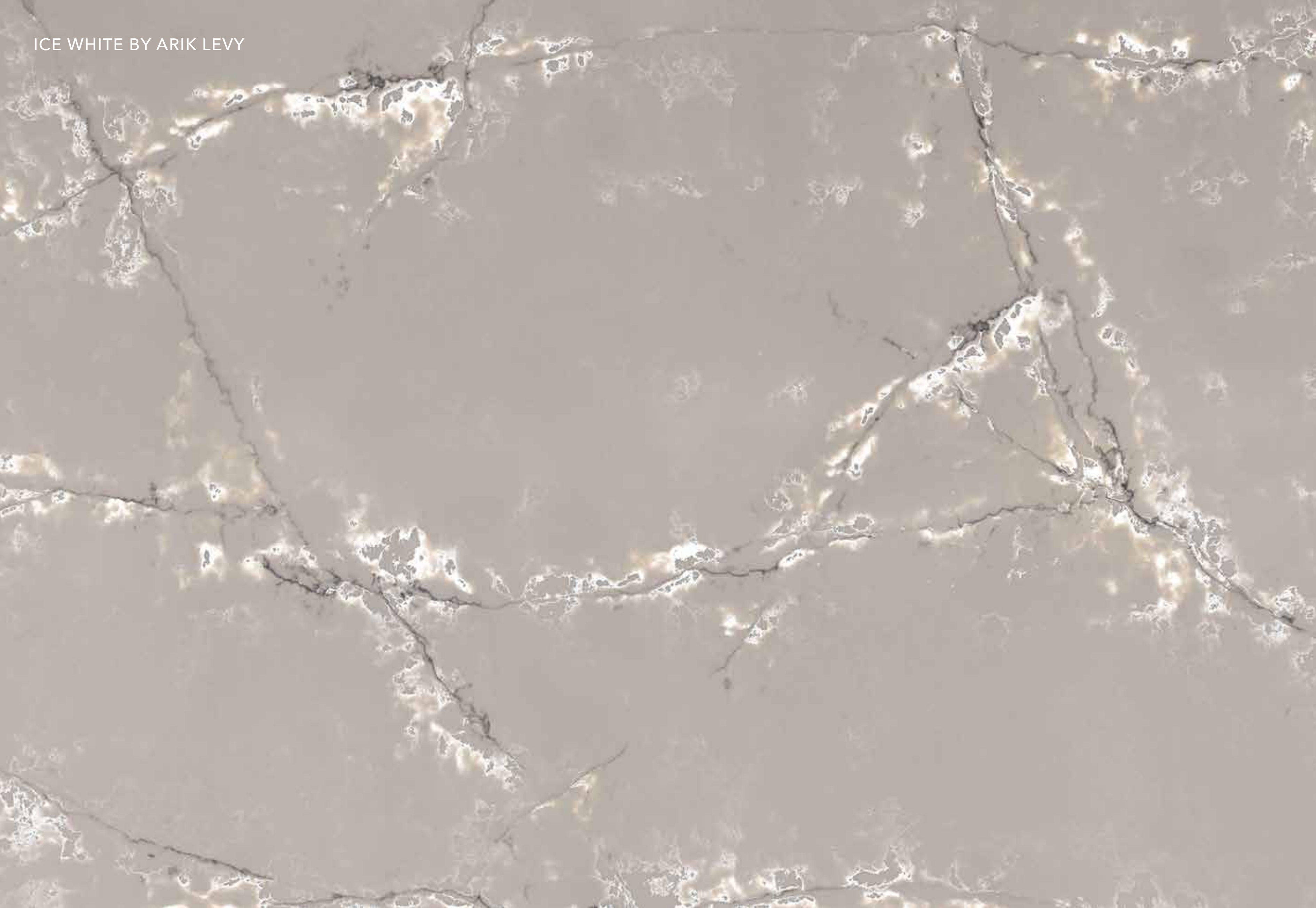
Ice Black by Arik Levy







ICE WHITE BY ARIK LEVY





Ice White by Arik Levy

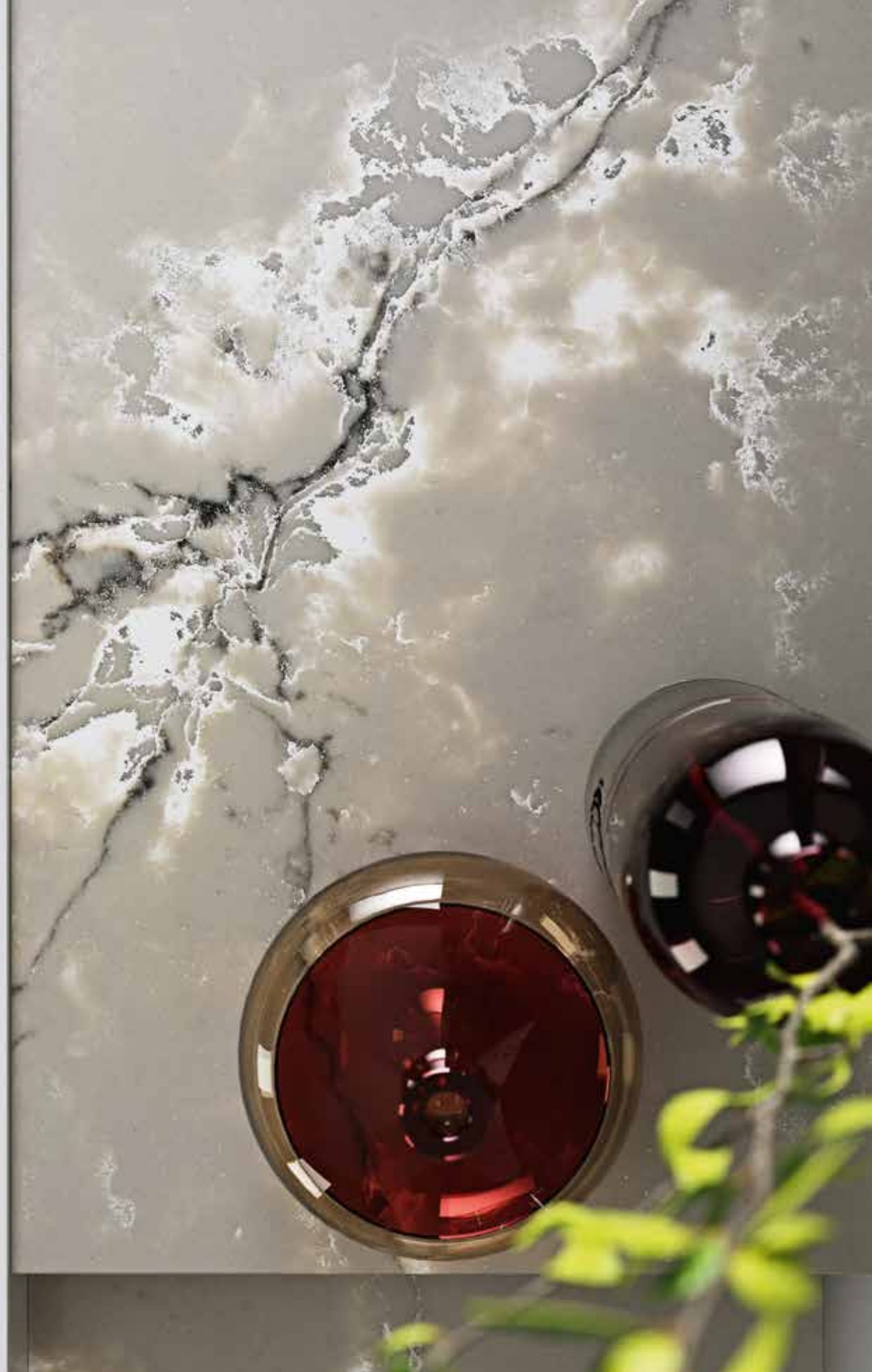




Ice White by Arik Levy



Ice White by Arik Levy





Ice White by Arik Levy



Ice White by Arik Levy





GENESIS

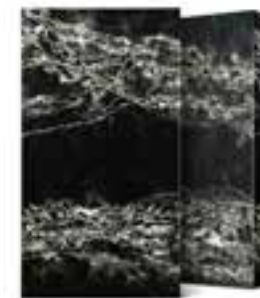
CREATED BY ARIK LEVY



Nebulous Gold
Created by Arik Levy
NEW



Cobweb
Created by Arik Levy
NEW



Ice Max Black
Created by Arik Levy
NEW



Ice Max Pure
Created by Arik Levy
NEW



Ice White
Created by Arik Levy



Ice Black
Created by Arik Levy

DESIGN SHOWS

Around the world



In 2016 COMPAC presented ICE OF GENESIS at the most important design event in the world: Design Miami. By means of a large installation in vertical and horizontal formats, Arik Levy demonstrated the versatility of ICE's possible applications, and the world first discovered all the beauty of this material.

"These slabs are as beautiful as a painting on the wall and as powerful as an ancient monolith."

Through all his exhibitions and installations, Arik Levy focuses on giving the viewer an artistic approach to architecture and design. His ability to apply the ICE OF GENESIS surface both to furniture, environments and sculptures, reaffirms the concept of "Functional Art" which the GENESIS collection aims to offer customers, marking a before and after in the world of surface coverings.

ICE OF GENESIS

At KBIS 2020 Las Vegas

IQ Made With Emotions. This concept underlines our participation at the KBIS 2020 fair in Las Vegas, which ran from the 21st to the 23rd of January 2020. COMPAC exhibits a wide range of designs, materials and designer pieces from the designer Arik Levy.





NEBULOUS GOLD™
by Arik Levy

Material Quartz



ICE OF GENESIS

At Design Miami

Acclaimed artist and designer, Arik Levy has collaborated with COMPAC, The Surfaces Company to create ICE, an installation presented at the 2016 edition of Design Miami. ICE is created from Levy's expressive GENESIS collection created for COMPAC.

For the Miami installation, through his artistic approach to architecture and design, Levy will show how the GENESIS collection for COMPAC enhances the genuine characteristics of quartz and marble.

Inspired by the great frozen lakes of ice which can be found in the Arctic, GENESIS reveals visual fragments similar to those found in natural stone and provokes the eye to delve into the ethereal qualities and surprising transparency of the material.

The Miami installation ICE presents GENESIS in vertical and horizontal formats, as both a surface and product, showing the many potential applications, as well as the beauty of COMPAC as a material.



ICE OF GENESIS

At Milan Design Week

COMPAC was delighted to present Kryptonite, an installation in collaboration with acclaimed artist and designer Arik Levy at Multiplex during Salone del Mobile, Milan 2017.

COMPAC and Levy showcase an artistic exploration of the new ICE OF GENESIS quartz collection, with an exclusive insight into the inspiration behind the material and innovation behind the making process.

"Kryptonite is something new, different and previously unseen. It's futuristic in terms of the technology used in the processing of the material. It has an ethereal quality, as if it came from another planet entirely, hence the reference to Kryptonite," explains Arik Levy.

The COMPAC space within Teatre Manzoni had three distinctive areas which explored the Mind, Matter and Life behind the material. Levy used his artistic approach to architecture and design to show the beauty and versatility of ICE OF GENESIS and to demonstrate how the collection can be used in different applications, from surfaces, all the way through to art and furniture.





Crafted from an innovative composite of technological quartz, the GENESIS collection is inspired by the great frozen lakes of ice which can be found in the Arctic.

Upon entering the space, visitors were presented with the technological: a towering three-metre-long shard sculpture showcasing the material's quality and capabilities. This gallery inspired a reinterpretation of technological quartz in the format of contemporary wall sculptures and art works.

On the Mezzanine floor, a never-before-seen visual breakdown of the material composition of GENESIS was exhibited. This material has the beauty and striking appearance of raw natural quartz but is actually a man-made substance with enhanced resilience, strength and non-porous qualities.

The third floor of the space applied the material into product design and acted as a gathering point during the week of the Salone with the chance to connect and engage with the COMPAC team. GENESIS was used to create two rectangular counters designed in an open format. Examples of COMPAC's additional ranges were also showcased in this space.

GENESIS reveals visual fragments similar to those found in natural stone and provokes the eye to delve into the ethereal qualities and surprising transparency of the material.

The GENESIS collection can be applied to surfaces on walls, floors, worktops, a variety of interior spaces, as well as pieces of furniture. The material is available in different finishes and colours.



"This installation for Salone del Mobile aims to create a journey through the ideas and inspirations behind the material. This ongoing partnership between COMPAC and me pushes the boundaries of the luxury surface market by merging art and technology through design," comments Arik Levy.

"Kryptonite is a further step forward to the rational side of the GENESIS project. It clearly responds to the request I personally made to Arik the first time I met him: to go even further and create new developments, objects and materials not yet in existence - things that have never been seen before," explains Paco Sanchis, COMPAC's CEO.

COMPAC and Levy also showcased a functional art installation in the garden of Palazzo Crivelli. As part of DeltaLight's Salone installation in Brera, visitors were invited to interact with large segments of COMPAC's technological marble within an urban landscape.

ICE OF GENESIS

At the London Design Festival

"This is when all the elements work together on our senses and bring us to ask questions about our relationship to space, materials, mass and nature."

This is a dialog between human and the fundamental horizontal and vertical parameters of our living domestic environment. The horizontal aspect is expressed through the presence of a massive mono-block mineral quartz, a sculptural abstract "kitchen-island" concept, "floating" like a black iceberg. The island sculpture is made of COMPAC quartz-based ICE OF GENESIS slabs set together as a three-dimensional puzzle, in order to express the continuity of the quartz veins characteristics. The piece appears to be nearly carved out of one solid block.

The dialog between the enormous mass of quartz iceberg and the lightness of the slices is what brings us to have a different approach towards the space dimensions, angles and orientations of our living spaces."

Arik Levy 2017



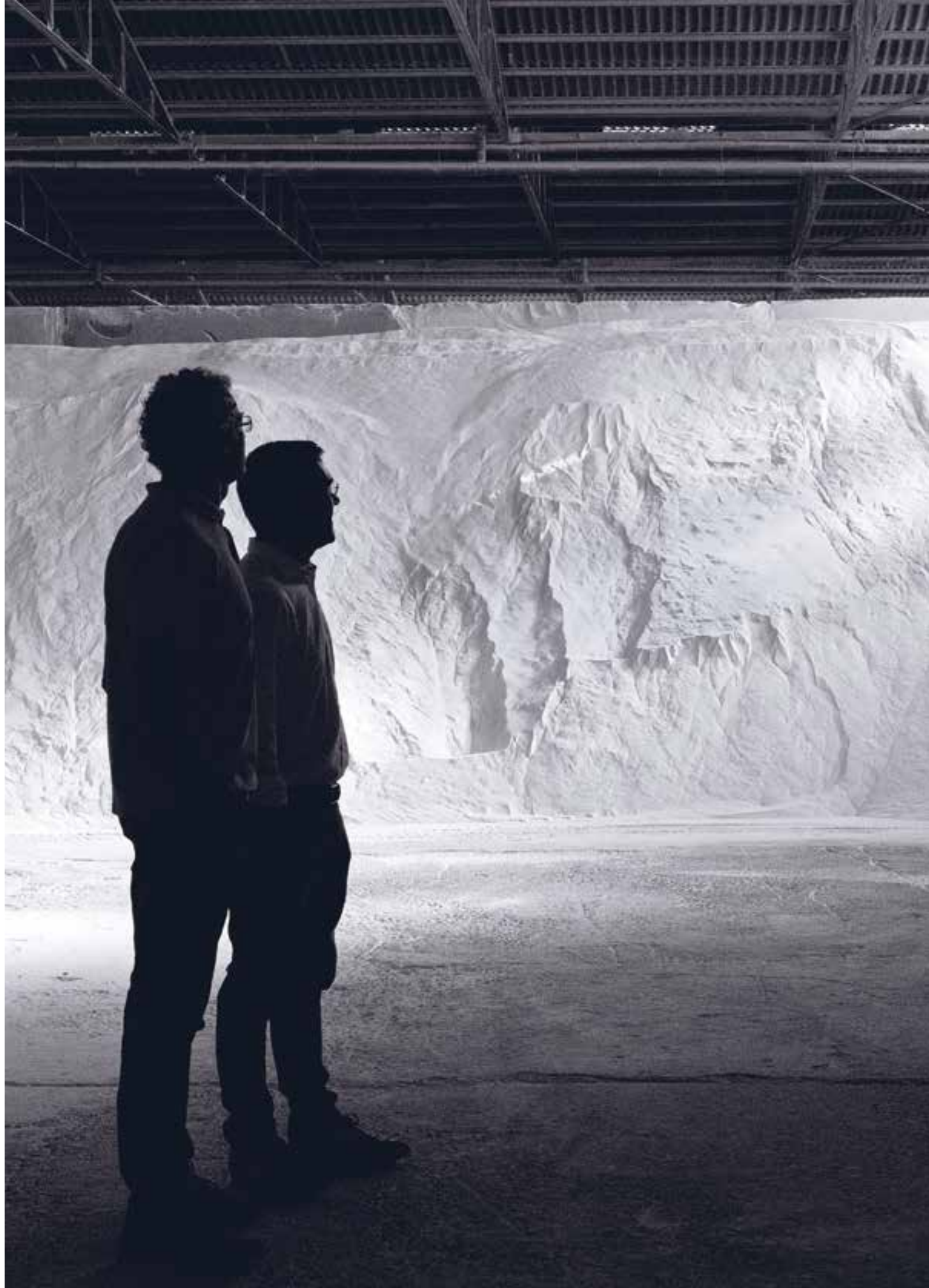


COMPAC and Arik Levy present a mono-block “floating” sculpture in mineral-quartz as a part of Design Frontiers during the London Design Festival 2017. Levy is creating a minimalist setting that will explore the dialogue between the horizontal and vertical parameters of our living environment. The centrepiece of the installation will be a massive sculptural mono-block mineral quartz kitchen island that will “float” within the space like a black iceberg – appearing as though it has been carved from a single block of quartz.

Thin vertical slices of different quartz-based slabs of COMPAC quartz and marble will create the main structure of the installation - these sections will create a feeling of endlessness against the high ceilings of Somerset House’s West Wing. The relationship between the enormous mass of the quartz iceberg and the lightness of the slices will create a juxtaposition within the space, forcing the audience to question the everyday angles and orientations of our living spaces.



The slices can be arranged in different orders and at different rhythms, to create a dynamic visual space and a kinetic feeling. The dialog between the enormous mass of the quartz iceberg and the lightness of the slices is what brings us to have a different approach towards the space dimensions, angles and orientations of our living spaces.”

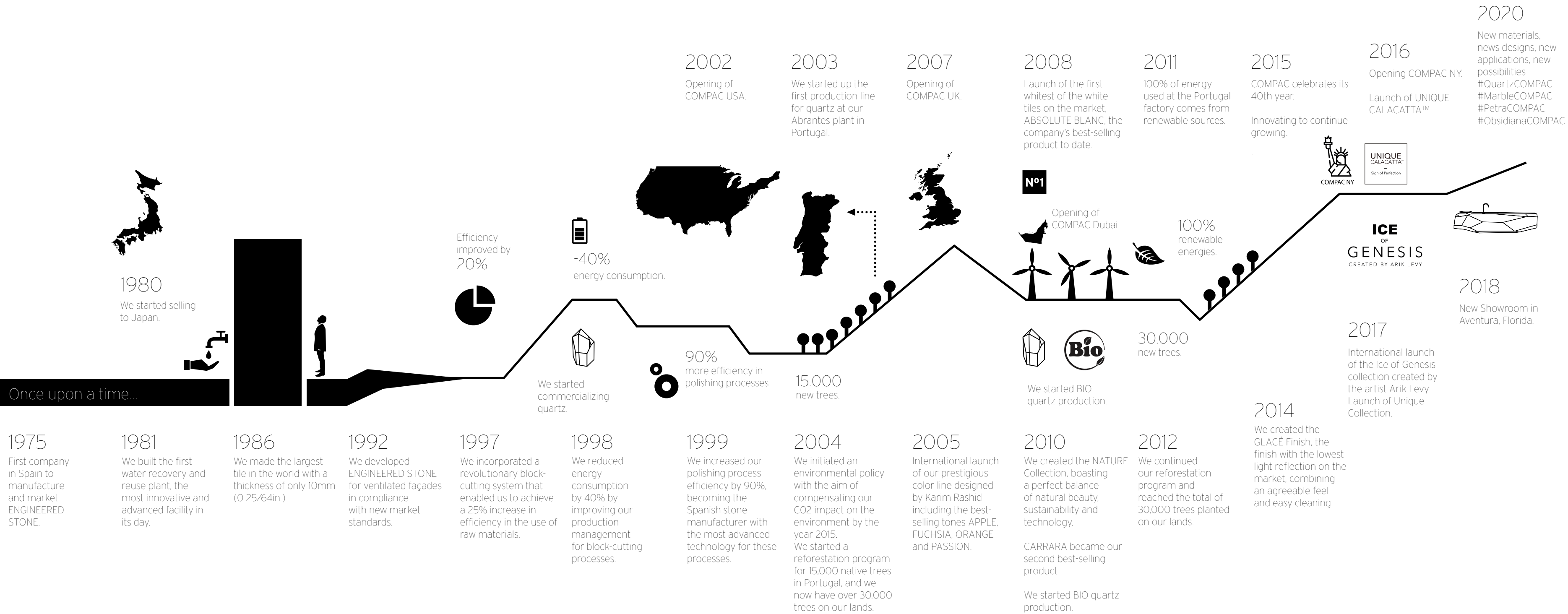


The Power of Talent

MINDS OVER MATTER

At COMPAC, we firmly believe that when mind and talent dominate matter. We do not only create better products, but inspire more valuable and rewarding experiences in our customers' homes and living and working spaces.

Since 1975 manufacturing the future of design



We are a leading company based in Spain marketing high quality decorative surfaces. COMPAC was founded in 1975 and it was the first Spanish firm specializing in the manufacture and distribution of marble and quartz surface coverings. Today we are a large multinational company with 100% Spanish capital that we have learned to grow while maintaining our flexibility and our independent spirit of decision making.

Environmental Commitment

In COMPAC Surfaces, we have a deep-rooted culture of Corporate Social Responsibility (CSR) aimed at actively contributing to social, economic and environmental improvement.

Following our environmental commitment, we have incorporated to the Unique Collection a BIO resin obtained from vegetal sources that allows us to create a natural and more respectful collection with the environment.



BIO CERTIFICATE

Distinction, responsibility and respect can, and must, go hand in hand. That's why the Genesis collection is made out of vegetable-origin raw materials such as hi-tech BIOresins, from renewable sources. This is certified by the prestigious BIO certification.





Sustainability Award

KBIS 2020

Within the framework of the KBIS 2020 exhibition, we have been awarded with a prize that recognizes us as a sustainable company committed to the environment. COMPAC's commitment to the environment has earned us the SUSTAINABILITY PRIZE, one of the 10 categories of the 30th ELECTION AWARDS that were held for the second time at KBIS.

A three-person jury awarded the renowned prize our company as a sustainable company committed to the environment. The jury highlighted the launch of the new Obsidian material, composed of recycled raw materials, as well as our sustainable trajectory. Since COMPAC we have been applying pioneer measures in

the industry for decades, such as the reforestation of trees on our lands in Portugal, the use of renewable energies in the production or manufacture of our materials, the recycling of water used in our processes and the manufacture of designs with organic resins.

SPAIN

PORTUGAL

UNITED STATES OF AMERICA

UNITED KINGDOM

SINGAPORE

UNITED ARAB EMIRATES

compac.us
marketing@compac.es



COMPAC
THE SURFACES COMPANY